

CERTIFICATE OF LOCATION OF GOVERNMENT CORNER

North Quarter Corner of Section 2, Township 107 N., Range 39 W., 5th P.M.

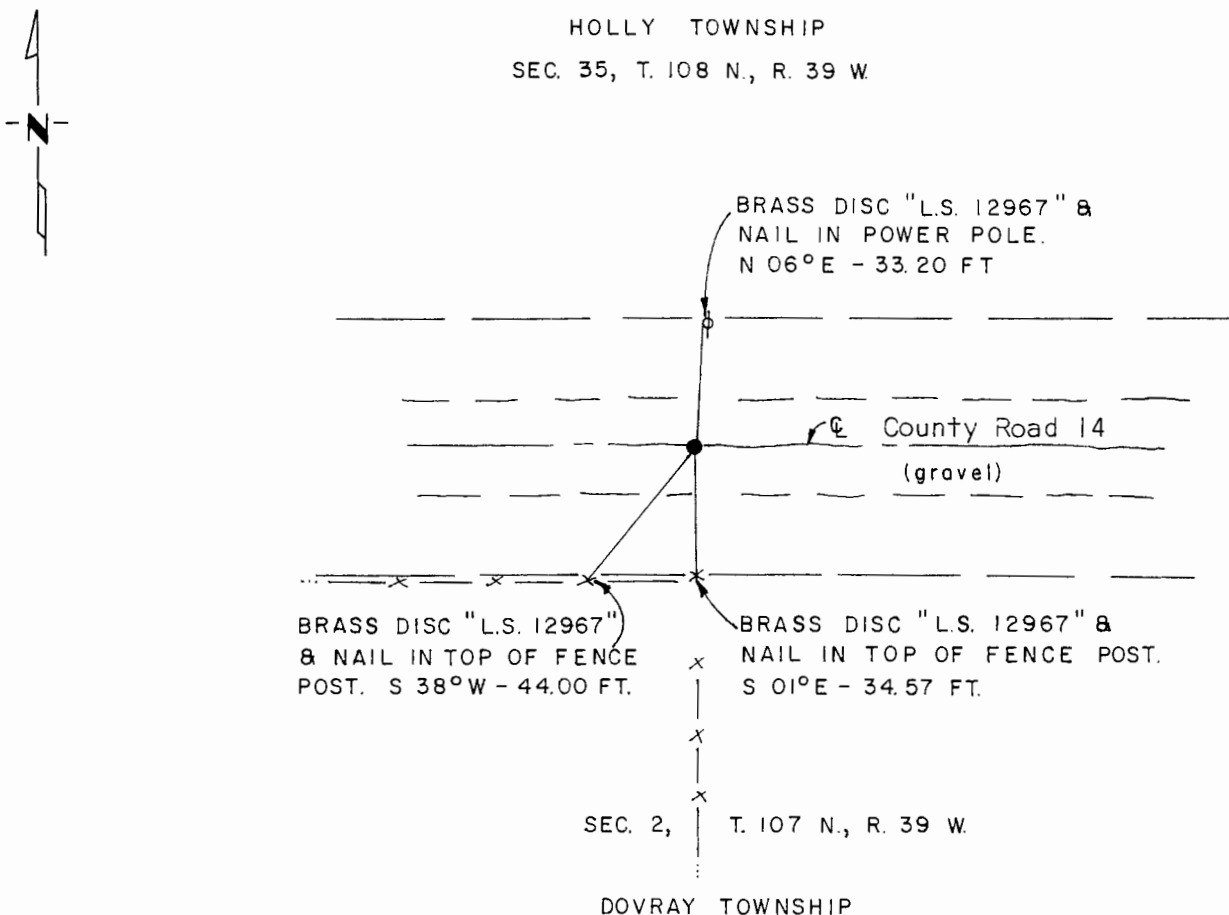
STATE OF MINNESOTA, County of Murray

At the corner location shown on the sketch:

- On Sept. 9, 1980 found a conc. mon. with an 'X' on top 6" below grade over a field
DATE
stone; conc. mon. over stone is on the C of Co. Rd. 14
 - left monument as found, lowered monument, removed monument (explain)
- On Sept. 9, 1980 placed a 1/2" iron reinforcing bar set with "L.S. 12967" cap
DATE
beside the conc. mon. for locating purposes.

SKETCH OF REFERENCE TIES

HOLLY TOWNSHIP
SEC. 35, T. 108 N., R. 39 W.



I hereby certify that this document and the data contained herein was prepared by me or under my direct supervision.

May S. Staf 12/28/81
SIGNATURE DATE

Registration No. 12967

- Land Surveyor, Professional Engineer
- County Surveyor, County Engineer

OFFICE OF THE COUNTY RECORDER
County of Murray

I hereby certify that this document was filed in the Co. Recorders office at 10 A.M. on the 18th day of February A.D., 1982.

County Recorder *Willard W. Ohme*
By _____, Deputy

DOCUMENT NO. _____